

- SINCE 1894 -



*Premium Dairy Products*

# DAIRY PRODUCT

---

CATALOG



YOUR LUXEMBOURG COOPERATIVE DAIRY SINCE 1894



LUXAIT





The Luxlait factory - Luxembourg





# SUMMARY

06

Our history  
Our values



82

Cheese



22

Milk  
Dairy drink



98

Yaourt du  
Luxembourg



40

Products of  
the world



118

Dairy dessert



54

Butter



128

Luxlait XXL



62

Cream



146

Custom made



72

Fresh cheese



154

Contact



# With more than 130 years of expertise, Luxlait is proud of how far we have come. Above all, we thank you, our dear customers, for being an integral part in our success.

---

Driven by the desire to satisfy you, Luxlait is undertaking a new stage in its growth and at the same time redefining its corporate mission: to be faithful to our values and traditions, to develop and grow in keeping with our farmers, our customers, our partners in Luxembourg and abroad whilst offering healthy, safe and tasty products.

Focused on always striving to better meet your expectations, every day we work on extending our range of products whilst placing the emphasis on the research and development of new approaches to taste that will meet the expectations of consumers today and tomorrow.

As in the past, the high quality standards of our products remain at the heart of our corporate strategy. We combine this with an increased corporate responsibility, especially within our agricultural association, as well as a policy that respects the environment and animal health and welfare.

A creator of jobs, Luxlait is proud to count more than 300 trained and qualified partners, who unite their everyday efforts around the company's values: respect, commitment, team spirit and excellence. A guarantee of success and growth, every day these values push us to reach new targets and guide us towards our ultimate goal: to be the first choice in the dairy products sector in Europe.



**M. Gilles GERARD**  
CEO

A handwritten signature in blue ink, which appears to be 'G. Gerard', written in a cursive style.



# A cooperative on a human scale

---



**M. Marc REINERS**  
PRESIDENT OF  
THE COOPERATIVE  
MEMBERS COMMITTEE

As a Luxembourg dairy producer passed down from generation to generation, the sensitivity I have developed for our cattle herd and for our milk produced from the pastures of Luxembourg is second nature to me.

In my role as Chairman of the Luxlait Agriculture Association, I represent my cooperative farmer colleagues and take part in the company's strategic decisions, whilst guaranteeing them fair and equitable pay.

My daily commitment with the Luxlait teams to serve the Luxembourg farming world and our customers goes beyond fairness. I also ensure that our raw material, of which we are so proud, is valued in accordance with the traditions and our mutual values acquired over more than 130 years of existence.

# A COOPERATIVE

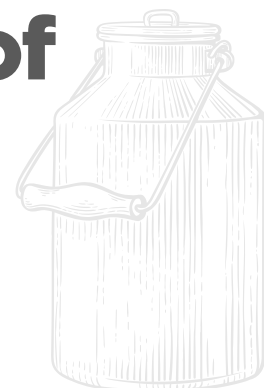
Luxlait belongs entirely to the member Luxembourg farmers who are the owners, customers and suppliers of the business.

Its organisation is based on fairness and solidarity, which are strong values among dairy producers.

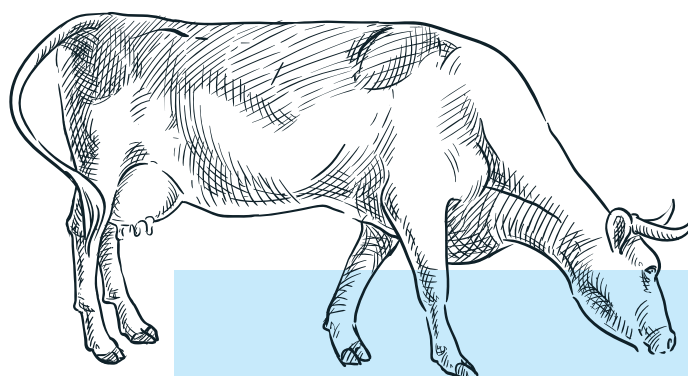


**300** FARMERS

**130 years of expertise**



**22 000** DAIRY COWS GRAZING IN THE LUXEMBOURG COUNTRYSIDE



**Our dairy cows**

HOLSTEIN  
SWISS BROWN  
NORMAN  
MONTBÉLIARDE  
JERSEY





"DENG MËLLECH VU LËTZEBUERG"



THE AGRICULTURAL COOPERATIVE GETS 100% OF ITS MILK FROM LUXEMBOURG AND PROCESSES THE PRODUCTS AT THE ROOST FACTORY (LOCAL PRODUCTION). SHORT DISTANCES, HIGH QUALITY STANDARDS AND THE COOPERATIVE CONCEPT MAKE LUXLAIT A GROWING COMPANY.



**165** MILLION LITRES OF PROCESSED MILK



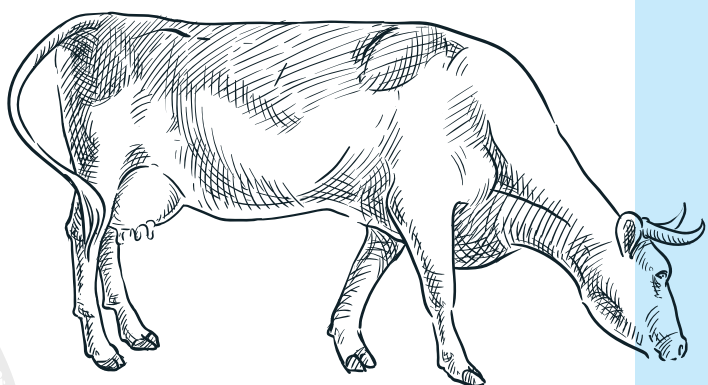
# ONE OF THE SAFEST PRODUCTS ON THE MARKET

Traceability and health controls from the farm to the finished product.

Luxlait is internationally certified by IFS Food. With more than 1500 physico-chemical analyses and 500 microbiological analyses carried out every day by our in-house laboratory. Luxlait is internationally certified by IFS Food.

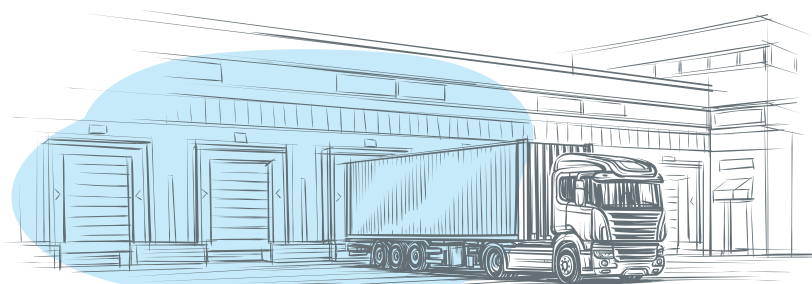
## 22 000

DAIRY COWS GRAZE IN THE LUXEMBOURG COUNTRYSIDE



## 11

VEHICLES FOR MILK COLLECTION



## 930 000

ORDER PREPARATION LINES IN LOGISTICS







*Premium Dairy Products*

ONE OF THE MOST MODERN  
DAIRIES IN EUROPE

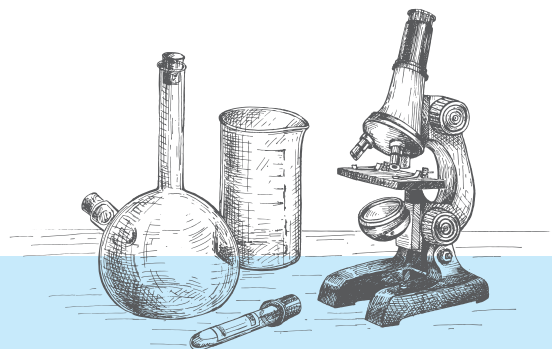


# 350

EXPERTS IN MILK  
PRODUCTION AND  
VALORISATION

# 1500

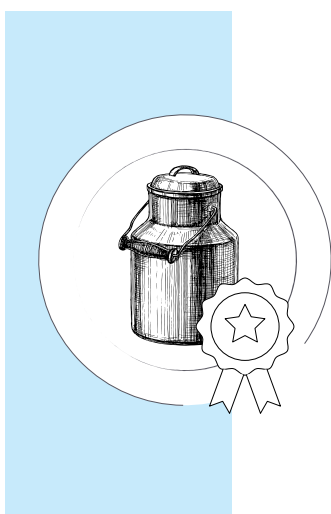
QUALITY CHECKS PER DAY



# IFS

Food

Score IFS 2023  
95.72 %



# 93.5 %

CLASS "A"  
MILK IN 2022





- premium quality -







## TOP QUALITY DAIRY PRODUCTS TO PLEASE THE WHOLE FAMILY... ALL OVER THE WORLD.

---

The satisfaction of its customers being at the centre of its concerns, Luxlait makes every effort to offer a wide range of high quality and ethically irreproachable products.

The milk, of Luxembourg origin, is collected by Luxlait tankers from human-scale farms and then transported to the dairy where it will be processed into exceptional products. Controlling all stages of the production chain allows Luxlait to guarantee its consumers flawless traceability.

Nearly 1,500 analyses per day are carried out in its in-house laboratory and Luxlait meets the most stringent international requirements of the agri-food industry, which has earned it ISO 22.000, IFS Food, BIO, halal and kosher certification.

The cooperative is part of a continuous improvement process. Being good is no longer enough, we strive to be the best.



- agricultural cooperative -





# AGRICULTURAL COOPERATIVE

---

Luxlait is owned by its associated farmers that act also as suppliers and customers.

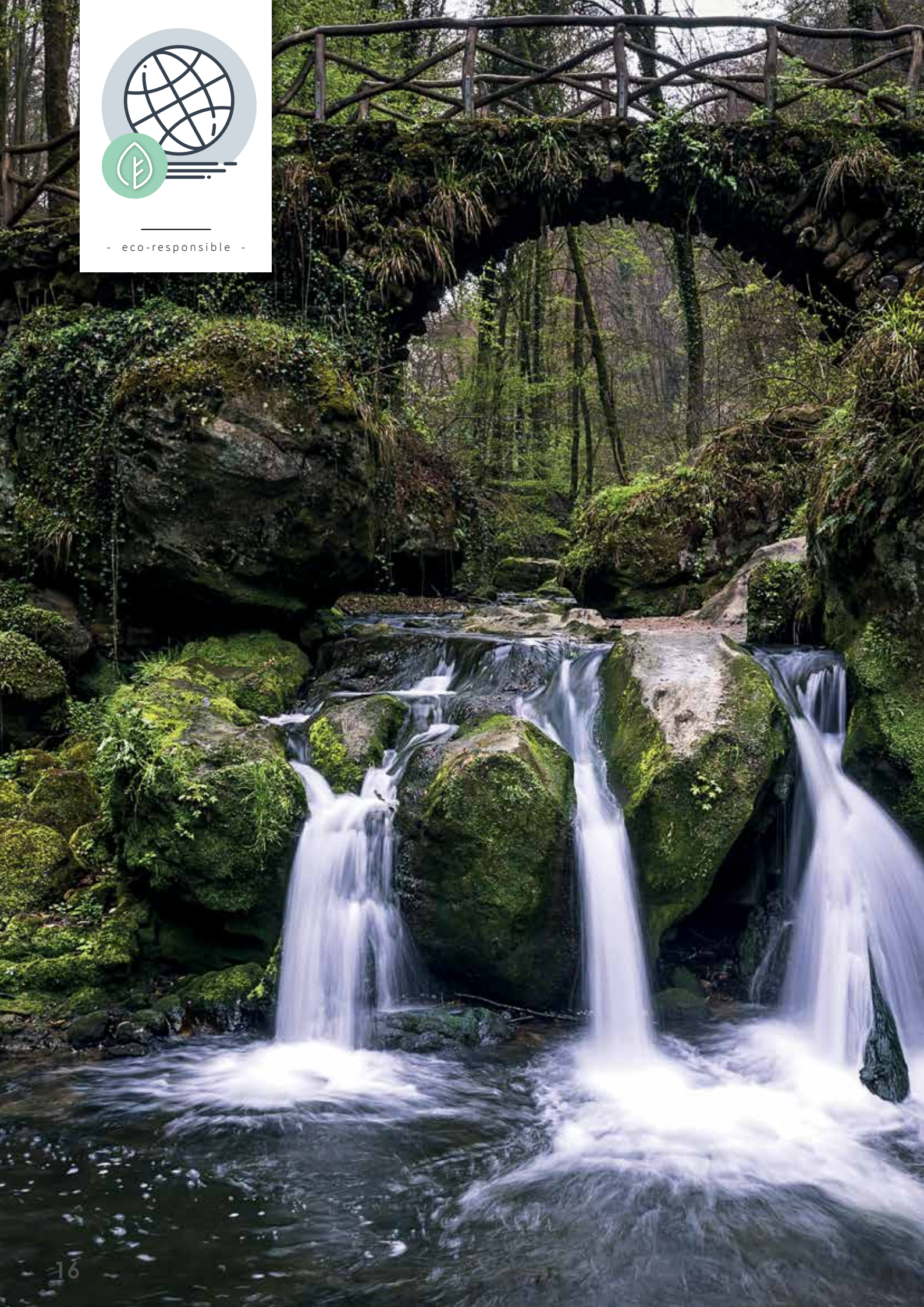
Its organisation is based on fairness and solidarity, which are strong values among our dairy producers.

All the income generated by Luxlait, is redistributed to the members of the cooperative. This way Luxlait is continuously guaranteeing the future of its farmers, their families and farms for decades.





- eco-responsible -







# ECO- RESPONSIBILITY AND CORPORATE CHALLENGES

---

Respect for the environment is an integral part of our corporate values.

The central location of its production unit as close as possible to its cooperative producers allows Luxlait to guarantee collection and distribution channels that are among the shortest in the world and, by extension, the freshness of its raw materials as well as a limited impact on the environment.

In terms of packaging, Luxlait pays close attention to the latest innovations in terms of packaging with a lower carbon footprint and already uses certified FSC and BIO-based solutions.

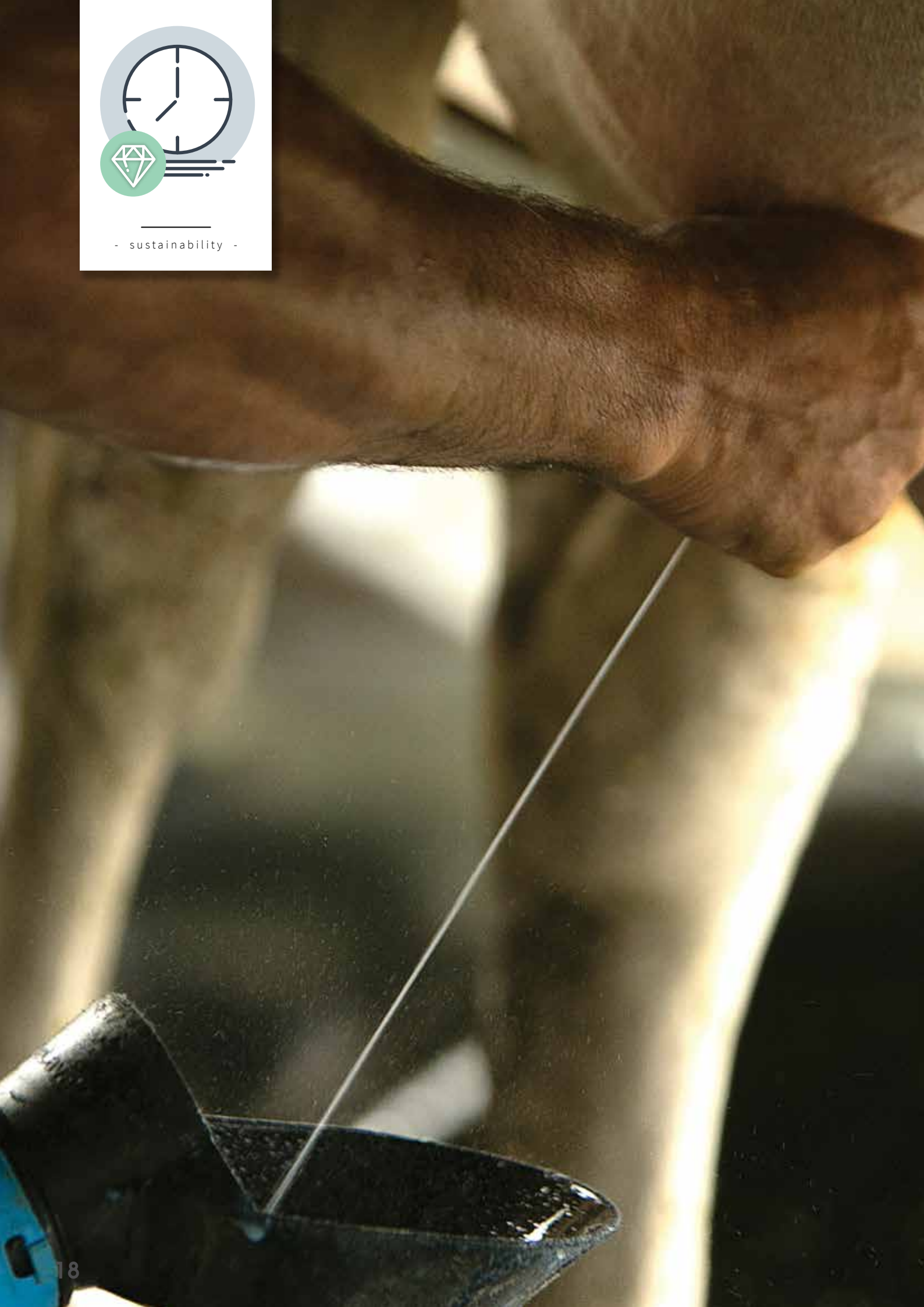
With regard to waste treatment, Luxlait has set up an efficient sorting and recycling system.

Its own purification plant allows Luxlait to treat wastewater before it is returned to the environment. The cooperative uses catchment water and equipment with reduced energy consumption.





- sustainability -





# IN KEEPING WITH HUMANS AND THEIR ENVIRON- MENT

---

As a pillar of Luxembourg agriculture, the Luxlait agricultural cooperative needs to think and act in a sustainable way, i.e. base its economic development on the protection of the environment and equitable social development. Aware of the growing expectations of consumers, in 2009 Luxlait started building one of the most modern production facilities in Europe, with continuous improvement as a guiding principle.

With its highly qualified staff, permanent technology watch and numerous investments, the traditional Luxembourg business prides itself on producing in a sustainable manner, in compliance with the hygiene and quality standards of the agri-food industry.





- animal welfare -







# ANIMAL WELFARE IS CENTRAL TO OUR CONCERNS

---

What would a dairy be without its cows?

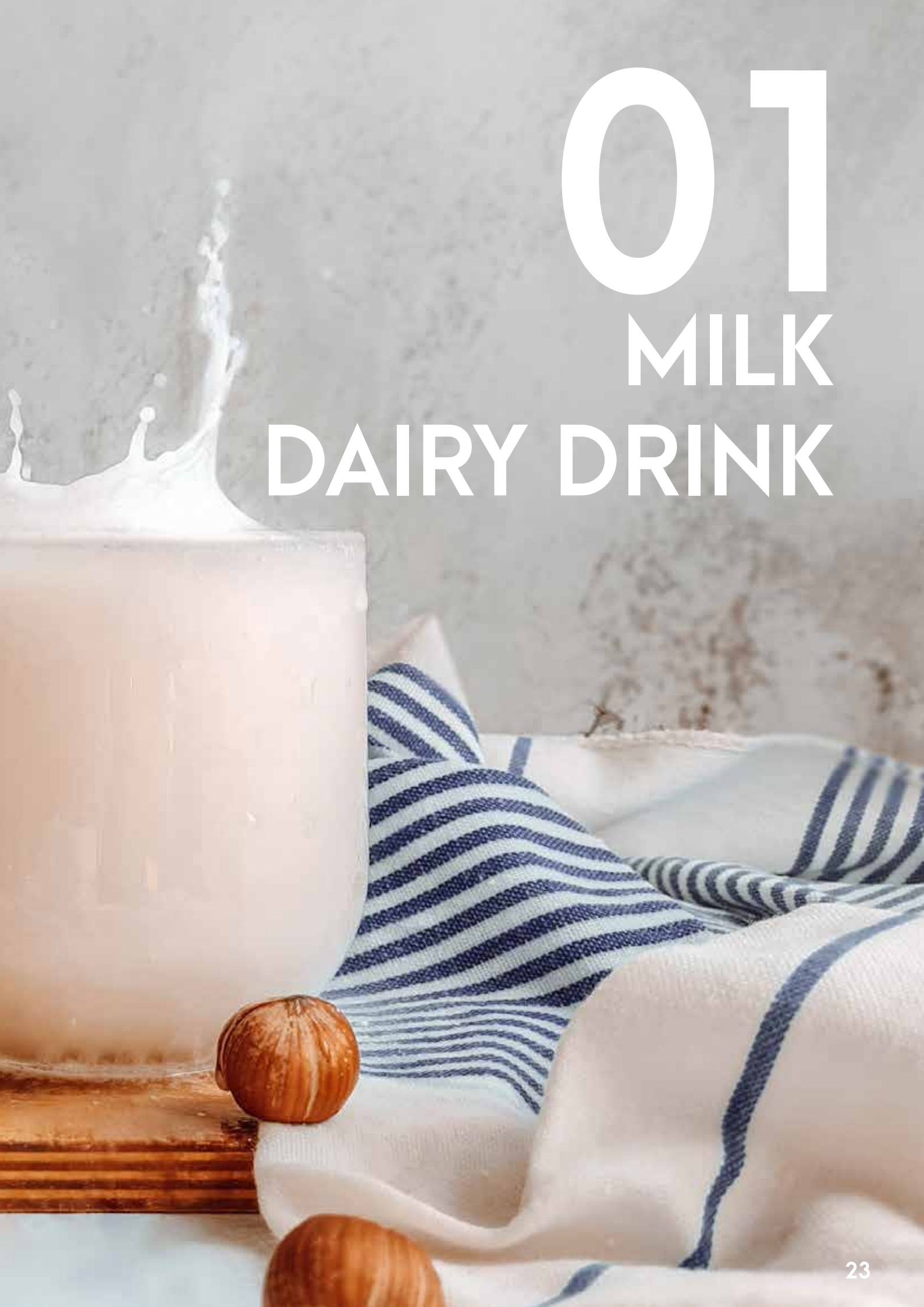
Luxlait makes it a point of honour to ensure animal welfare.

Actions such as keeping a feeding plan up-to-date, the availability of clean and spacious stalls, clean water troughs and a comfortable grazing area per cow are taken into account and are subject to constant health monitoring by its «Dairy Production Service».

Only happy and healthy cows produce quality milk.







# 01

MILK  
DAIRY DRINK





# FRESH MILK

## Microfiltration...the secret of taste

We have chosen to use a process called microfiltration. Fresh microfiltered milk keeps fresh longer while retaining its taste and nutritional properties.



**3.5 % fat**  
**0.5 L Tetra Top®**

51114 (x8)  
**EAN article:**  
5450168511149  
**EAN box:**  
5450168511145

8 items  
153 boxes  
9 layers



**3.5 % fat**  
**1 L Tetra Top®**

51110 (x8)  
**EAN article:**  
5450168511101  
**EAN box:**  
5450168311109

8 items  
102 boxes  
6 layers



**1.5 % fat**  
**1 L Tetra Top®**

51115 (x8)  
**EAN article:**  
5450168511156  
**EAN box:**  
5450168311152

8 items  
102 boxes  
6 layers



Large  
size  
P.132





# UHT MILK

## Prolonged storage

UHT milk can be stored for several months at room temperature, provided that its packaging is closed. After opening, it should be placed in the refrigerator and consumed quickly. UHT milk is therefore the most long-life milk there is.



**3.5 % fat**  
**0.25 L Tetra Prisma®**

51162 (x18)  
**EAN article:**  
5450168511620  
**EAN box:**  
5450168311626

18 items  
153 boxes  
9 layers



**3.5 % fat**  
**1 L Tetra Prisma®**

51150 (x6)  
**EAN article:**  
5450168511507  
**EAN box:**  
5450168311503

6 items  
130 boxes  
5 layers



**0 % fat**  
**1 L Tetra Prisma®**

51165 (x6)  
**EAN article:**  
5450168511651  
**EAN box:**  
5450168311657

6 items  
130 boxes  
5 layers



**1.5 % fat**  
**1 L Tetra Prisma®**

51151 (x6)  
**EAN article:**  
5450168511514  
**EAN box:**  
5450168311510

6 items  
130 boxes  
5 layers



Large  
size  
P.132



# 0% LACTOSE MILK

## Lactose-free\* milk from Luxembourg!

Discover the first 0% lactose first milk with 100% Luxembourgish milk. This is a quality product, good taste and with a long shelf life.

*\* the lactose content is < 0.01 g/100 ml at 99.8% less lactose than traditional milk*



**1.5% fat**  
**1L Tetra Prisma®**

51159 (x6)

**EAN article:**

5450168511590

**EAN box:**

5450168311596

6 items

130 boxes

5 layers





# ORGANIC MILK



## Milk from organic farming

Luxlait organic milk is available in two versions: fresh microfiltered milk for optimal preservation of taste properties and UHT semi-skimmed milk for storage for several months at room temperature.



**Fresh 3.5 % fat  
0.25 L Tetra Rex®**

51916 (x8)  
**EAN article:**  
5450168519169  
**EAN box:**  
5450168319165

8 items  
260 boxes  
13 layers



**Fresh 3.5 % fat  
1 L Tetra Top®**

51914 (x8)  
**EAN article:**  
5450168519145  
**EAN box:**  
5450168319141

8 items  
102 boxes  
6 layers



**UHT 1.5 % fat  
1 L Tetra Prisma®**

51158 (x6)  
**EAN article:**  
5450168511583  
**EAN box:**  
5450168311589

6 items  
130 boxes  
5 layers



Organic



Large  
size  
P.132





# FRESH CHOCOLATE MILK



The sweetness that will take you back to your childhood

The recipe, the creaminess and the freshness of our chocolate milk have made it a real best-seller. It is exclusively produced from our Luxembourg milk.



**3.5 % fat**  
**0.25 L Tetra Rex®**

55116 (x8)  
**EAN article:**  
5450168551169  
**EAN box:**  
5450168351165

8 items  
260 boxes  
13 layers



**3.5 % fat**  
**0.5 L Tetra Top®**

55111 (x8)  
**EAN article:**  
5450168551114  
**EAN box:**  
5450168351110

8 items  
153 boxes  
9 layers



**3.5 % fat**  
**1 L Tetra Top®**

55110 (x8)  
**EAN article:**  
5450168551107  
**EAN box:**  
5450168351103

8 items  
102 boxes  
6 layers



Fair-  
trade





# FLAVOURED MILK

The relaxing break to always have with you

4 flavours make up this range of shakers, in a 25 cl format with a resealable cap.



**Strawberry milk 1 % fat  
0.25 L Tetra Prisma®**

55300 (x18)

**EAN article:**

5450168553002

**EAN box:**

5450168353008

18 items

153 boxes

9 layers



**Banana milk 1 % fat  
0.25 L Tetra Prisma®**

55301 (x18)

**EAN article:**

5450168553019

**EAN box:**

5450168353015

18 items

153 boxes

9 layers



**Chocolate milk 3.5 % fat  
0.25 L Tetra Prisma®**

55306 (x18)

**EAN article:**

5450168553064

**EAN box:**

5450168353060

18 items

153 boxes

9 layers



**Vanilla milk 1.6 % fat  
0.25 L Tetra Prisma®**

55302 (x18)

**EAN article:**

5450168553026

**EAN box:**

5450168353022

18 items

153 boxes

9 layers



**Chocolat milk  
with Fairtrade  
cocoa**





# CAFÉ LATTE

## The relaxing break to always have with you

The Café Latte range is made up of 3 flavours: Cappuccino, Caramel and Espresso. The 250 ml format and the resealable cap make it the perfect drink to enjoy on the go.



**Café latte cappuccino**  
**2.6 % fat**  
**0.25 L Tetra Prisma®**

55303 (x18)

**EAN article:**

5450168553033

**EAN carton:**

5450168353039

18 items

153 layers

9 boxes



**Café latte caramel**  
**2.7 % fat**  
**0.25 L Tetra Prisma®**

55305 (x18)

**EAN article:**

5450168553057

**EAN carton:**

5450168353053

18 items

153 layers

9 boxes



**Café latte espresso**  
**2.5 % fat**  
**0.25 L Tetra Prisma®**

55304 (x18)

**EAN article:**

5450168553040

**EAN carton:**

5450168353046

18 items

153 layers

9 boxes





# EGG NOG

## The delicacy of the end-of-year celebrations

Our Egg Nog is a creamy drink, flavoured with vanilla and rum flavours (without alcohol), which can be enjoyed chilled, at any time of the day. Gourmet tip for adults: for a stronger taste, add a few drops of rum.



### Fresh 3.5 % fat 0.75 L Tetra Top®

55205 (x8)  
**EAN article:**  
5450168552050  
**EAN box:**  
5450168352056

8 items  
102 boxes  
6 layers



### Fresh 3.5 % fat 0,2 L Tetra Prisma®

55308 (x18)  
**EAN article:**  
5450168553088  
**EAN box:**  
5450168353084

18 items  
187 boxes  
11 layers

*Product available from  
mid-October to end of  
December*



### UHT 4 % fat 1 Tetra Prisma®

55208 (x6)  
**EAN article:**  
5450168552081  
**EAN box:**  
5450168352087

6 items  
130 boxes  
5 layers

*Product available from  
September to February  
(only for export)*







A close-up photograph of a glass of beer with a thick head of foam on the left. In the foreground, a copper tray holds a dish of braised meat with vegetables, garnished with fresh green herbs. Another copper tray is visible in the background, slightly out of focus. The overall scene is set against a dark, textured background.

# 02

## PRODUCTS OF THE WORLD







# FERMENTED MILK

## All the richness and generosity of a culture

The creamy and tasty recipe for Luxlait fermented milk is popular with all consumers. For more than 30 years, this tasty and slightly acidic drink has been the number one seller in Europe.



**1.5 % fat**  
**0.5 L Tetra Top®**

55103 (x8)

**EAN article:**

5450168551039

**EAN box:**

5450168351035

8 items

153 boxes

9 layers



**1.5 % fat**  
**1 L Tetra Top®**

55101 (x8)

**EAN article:**

5450168551015

**EAN box:**

5450168351011

8 items

102 boxes

6 layers









# LABEN BELDI

## Longer maturation for an even more traditional taste

Traditionally, milk is beaten in the "Garba" for several hours to obtain fermented milk. The Laben Beldi is then poured into a terracotta jug. This is covered with a wet Hessian cloth in order to preserve the freshness of the Laben as long as possible. At Luxlait we wanted to reproduce this traditional recipe from the high plateaus of the Atlas Mountains as faithfully as possible.



**1.6 % fat**  
**1 L Tetra Top®**

*55190(x8)*

**EAN article:**

5450168551909

**EAN box:**

5450168351905

*8 items*

*102 boxes*

*6 layers*







# RAÏB

## A fermented milk with tradition

Raïb is frequently served with couscous or tagine and will allow you to make smoothies and milkshakes.



**2.6 % fat**  
**1 L Tetra Top®**

55140 (x8)

**EAN article:**

5450168551404

**EAN box:**

5450168351400

8 items

102 boxes

6 layers









# AYRAN

## A fermented milk with tradition

Ayran is probably one of the most famous traditional Turkish drinks. Made from yoghurt, water and salt, Ayran is a drink full of benefits and very refreshing in summer. It can be enjoyed pure or as an accompaniment to spicy dishes.



**UHT 1.7 % fat  
0.25 L Tetra Prisma®**

55150 (x18)  
**EAN article:**  
5450168551503  
**EAN box:**  
5450168351509

18 items  
153 boxes  
9 layers



**UHT 1.7 % fat  
1 L Tetra Prisma®**

55149 (x6)  
**EAN article:**  
5450168551497  
**EAN box:**  
5450168351493

6 items  
130 boxes  
5 layers







# RAÏBI

## A real childhood memory

Raïbi is a fermented drink created in Morocco in the 1960s. Its reputation now extends far beyond its borders. Luxlait Raïbi is defined by its incomparable creaminess and flavour. Enjoyed by the whole family, children love it as it is or make it into ice cream by freezing it. The adults are reminded of their childhood or their visit to Morocco.



### Pomegranate 1.6 % fat 0.5 L Tetra Top®

55180 (x8)  
**EAN article:**  
 5450168551800  
**EAN box:**  
 5450168351806

8 items  
 153 boxes  
 9 layers



### Pomegranate 1.6 % fat 1 L Tetra Top®

55179 (x8)  
**EAN article:**  
 5450168551794  
**EAN box:**  
 5450168351790

8 items  
 102 boxes  
 6 layers



### Pistachio 1.6 % fat 0.5 L Tetra Top®

55182 (x8)  
**EAN article:**  
 5450168551824  
**EAN box:**  
 5450168351820

8 items  
 153 boxes  
 9 layers



### Pistachio 1.6 % fat 1 L Tetra Top®

55181 (x8)  
**EAN article:**  
 5450168551817  
**EAN box:**  
 5450168351813

8 items  
 102 boxes  
 6 layers



### Mango 1.7 % fat 0.5 L Tetra Top®

55184 (x8)  
**EAN article:**  
 5450168551848  
**EAN box:**  
 5450168351844

8 items  
 153 boxes  
 9 layers



### Mango 1.7 % fat 1 L Tetra Top®

55183 (x8)  
**EAN article:**  
 5450168551831  
**EAN box:**  
 5450168351837

8 items  
 102 boxes  
 6 layers







# KEFIR

## Our kefir is available in 3 flavours

Kefir is an ancestral drink originating from the nomads of the Caucasus Mountains. Thanks to its specific fermentation, fresh milk is transformed into a slightly acidic, fresh and creamy drink.



### Plain 1.6 % fat 0.5 L Tetra Top®

55170 (x8)  
**EAN article:**  
5450168551701  
**EAN box:**  
5450168351707

8 items  
153 boxes  
9 layers



### Vanilla 1.6 % fat 0.5 L Tetra Top®

55171 (x8)  
**EAN article:**  
5450168551718  
**EAN box:**  
5450168351714

8 items  
153 boxes  
9 layers



### Blueberry 1.6 % fat 0.5 L Tetra Top®

55172 (x8)  
**EAN article:**  
5450168551725  
**EAN box:**  
5450168351721

8 items  
153 boxes  
9 layers







# LASSI

## Traditional beverage

The Lassi, born out of Indian and Pakistani culinary traditions, is a tribute to the love of flavours that define their heritage. Luxlait Mango Lassi takes this traditional recipe and creates a delicious, refreshing and smooth drink. It represents the generosity and conviviality that animate the Indian and Pakistani communities.



**1,7 % m.g.**  
**1 L Tetra Top®**

*55187 (x8)*

**EAN article:**

5450168551879

**EAN box:**

5450168351875

*8 items*

*102 boxes*

*6 layers*



**Tetra  
Pak**







# 03 BUTTER









# BEURRE ROSE

## A recipe unchanged since 1932

The preparation of "Beurre Rose" butter depends on the expertise of the Luxlait master butter-makers. Unlike industrial butter, the cream is left maturing after being pasteurised by adding carefully selected lactic acid bacteria. That's when the unique taste of our butter develops.



### 5x10 items of 10 G Plastic tray

52123 (x20)  
**EAN article:**  
5450168521230  
**EAN box:**  
5450168521236

20 items  
30 boxes  
3 layers



### 125 G Aluminium packaging

52106 (x48)  
**EAN article:**  
5450168521063  
**EAN box:**  
5450168321069

48 items  
50 boxes  
4 layers



### 250 G Aluminium packaging

52102 (x40)  
**EAN article:**  
5450168521025  
**EAN box:**  
5450168321021

40 items  
60 boxes  
5 layers



### 250 G Plastic tray

52105 (x40)  
**EAN article:**  
5450168521056  
**EAN box:**  
5450168321052

40 items  
50 boxes  
5 layers



### 500 G Aluminium packaging

52101 (x30)  
**EAN article:**  
5450168521018  
**EAN box:**  
5450168321014

30 items  
40 boxes  
5 layers



AOP



Large  
size  
P.136





# BUTTER- BASED SPECIALTIES

## Available in 3 versions

Thanks to a mixture of butter and rapeseed oil, they can be used immediately. Our "light" version has up to half the fat content of conventional butter.



**Spreadable**  
**250 G - 75 % fat**  
**Plastic**  
**tray**

52510 (x12)  
**EAN article:**  
5450168525108  
**EAN box:**  
5450168325104

12 items  
168 boxes  
14 layers



**Semi-salted**  
**250 G - 75 % fat**  
**Plastic**  
**tray**

52515 (x12)  
**EAN article:**  
5450168525153  
**EAN box:**  
5450168325159

12 items  
168 boxes  
14 layers



**Light**  
**250 G - 40 % fat**  
**Plastic**  
**tray**

52520 (x12)  
**EAN article:**  
5450168525207  
**EAN box:**  
5450168325203

12 items  
168 boxes  
14 layers







# GARLIC AND HERB BUTTER

## Made from "Beurre Rose"

For your barbecues, meat dishes or whatever you like: Luxlait offers a garlic and fine herb butter. Made from traditional Luxembourg "Beurre Rose" (AOP), it is enhanced with parsley and garlic.



**Garlic and fine herb**  
**125 G**  
**Roll**

52530 (x10)  
**EAN article:**  
5450168525306  
**EAN box:**  
5450168325302

*10 items*  
*240 boxes*  
*10 layers*







# 04

## CREAM







# FRESH LIQUID CREAM

## The queen of whipped cream

Made without preservatives, the 33% and 36% fat liquid creams are fresh products and their authentic taste is proof of this. They go wonderfully with hot and cold dishes.



**33 % fat**  
**0.25 L Tetra Rex®**

53072 (x8)  
**EAN article:**  
5450168530737  
**EAN box:**  
5450168330733

8 items  
260 boxes  
13 layers



**36 % fat**  
**0.5 L Tetra Top®**

53106 (x8)  
**EAN article:**  
5450168531062  
**EAN box:**  
5450168331068

8 items  
153 boxes  
9 layers



**36 % fat**  
**1 L Tetra Top®**

53105 (x8)  
**EAN article:**  
5450168531055  
**EAN box:**  
5450168331051

8 items  
102 boxes  
6 layers



Large  
size  
P.134





# UHT LIQUID CREAM

## Excellent cooking performance

UHT liquid creams are ideal for making sauces, soups and desserts or simply plain to accompany fruit. They are resistant to cooking and add creaminess to all dishes.



**Smooth**  
**12 % fat**  
**0.2 L Tetra Prisma®**

53195 (x18)  
**EAN article:**  
5450168531956  
**EAN box:**  
5450168331952

18 items  
187 boxes  
11 layers



**Whole**  
**30 % fat**  
**0.2 L Tetra Prisma®**

53194 (x18)  
**EAN article:**  
5450168531949  
**EAN box:**  
5450168331945

18 items  
187 boxes  
11 layers



**Culinary cream**  
**18 % fat**  
**1 L Tetra Prisma®**

53193 (x6)  
**EAN article:**  
5450168531932  
**EAN box:**  
5450168331938

6 items  
130 boxes  
5 layers



**Whole**  
**35 % fat**  
**1 L Tetra Prisma®**

53186 (x6)  
**EAN article:**  
5450168531857  
**EAN box:**  
5450168331860

6 items  
130 boxes  
5 layers





# COFFEE CREAM

## A little dose of happiness

This small portion of cream offsets the natural bitterness of the coffee and adds a special sweetness that cannot be obtained from milk. In short, the essential plus for all lovers of coffee with cream.



**10 pod of 10 G**  
**10 % fat**  
**Pods**

53218 (x20)  
**EAN article:**  
5450168532182  
**EAN box:**  
5450168332188

20 items  
192 boxes  
16 layers



Large  
size  
P.134







# MATURED CREAM

## The basis of gastronomy

Thick and creamy, you won't be able to resist the delicacy of our sour creams. You will appreciate their excellent cooking performance and softness. Their qualities for binding sauces, garnishing dishes and providing tasty toppings will delight cooking enthusiasts. Their practical format will make your daily cooking easier.



**Light**  
**15 % fat**  
**250 G - Pot**

53115 (x6)  
**EAN article:**  
5450168531154  
**EAN box:**  
5450168331150

6 items  
240 boxes  
15 layers



**French style**  
**30 % fat**  
**250 G - Pot**

53159 (x6)  
**EAN article:**  
5450168531598  
**EAN box:**  
5450168331594

6 items  
240 boxes  
15 layers



**Thick**  
**30 % fat**  
**250 G - Pot**

53113 (x6)  
**EAN article:**  
5450168531130  
**EAN box:**  
5450168331136

6 items  
240 boxes  
15 layers



**Thick**  
**30 % fat**  
**500 G - Pot**

53111 (x6)  
**EAN article:**  
5450168531116  
**EAN box:**  
5450168331112

6 items  
99 boxes  
11 layers



Large  
size  
P.134







# 05

## FRESH CHEESE







# COTTAGE CHEESE

## Recognised for its quality and taste

Developed naturally, the cheese cottage contains no preservatives or stabilisers. Its typical grains and its good creamy taste make it a real "best seller" with all our customers. It can be eaten with a spoon, as a spread on bread, served on toast as an aperitif, mixed with a salad or used in various culinary preparations.



**30 % Cream  
225 G - Pot**

56216 (x6)  
**EAN article:**  
5450168562165  
**EAN box:**  
5450168362161

6 items  
240 boxes  
15 layers



**30 % Cream  
450 G - Pot**

56215 (x6)  
**EAN article:**  
5450168562158  
**EAN box:**  
5450168362154

6 items  
99 boxes  
11 layers







# SOFT WHITE CHEESE

## A unique taste, a touch of freshness and a melting texture

With no additives or preservatives, you will find all the purity and the benefits of a fresh cheese rich in protein. For dessert or snacks, as an accompaniment or on its own, it is a real delight!



**Light**  
**0.2 % fat**  
**250 G - Pot**

56106 (x6)  
**EAN article:**  
5450168561069  
**EAN box:**  
5450168361065

6 items  
240 boxes  
15 layers



**Light**  
**0.2 % fat**  
**500 G - Pot**

56105 (x6)  
**EAN article:**  
5450168561052  
**EAN box:**  
5450168361058

6 items  
99 boxes  
11 layers



**With cream**  
**9.2 % fat**  
**250 G - Pot**

56109 (x6)  
**EAN article:**  
5450168561090  
**EAN box:**  
5450168361096

6 items  
240 boxes  
15 layers



**With cream**  
**9.2 % fat**  
**500 G - Pot**

56108 (x6)  
**EAN article:**  
5450168561083  
**EAN box:**  
5450168361089

6 items  
99 boxes  
11 layers



Large  
size  
P.141





# BRACH

## Luxembourg speciality

Luxlait Brach is made from pasteurised whole milk to which lactic ferments have been added. Historically, it was used in Luxembourg cooking in times of famine as an accompaniment to the famous "Gequellte Gromper" (baked potato).



**3.5% fat**  
**250 G - Pot**

54211 (x6)

**EAN article:**

5450168542112

**EAN box:**

5450168342118

*6 items*

*240 boxes*

*15 layers*





# ORGANIC FAISSELLE



## Prepare it however you like

Our Organic Faisselle is a fresh farm cheese made from organic pasteurised whole milk. It takes its name from the mould in which it drips: the Faisselle. All stages of production are done by hand, from moulding with a ladle to the closing of the jars by our master cheesemakers. Faisselle can be used in your savoury or sweet dishes or eaten plain or simply garnished with coulis, jam or honey.



**3.5 % fat**  
**2x 100 G**  
**Pot**

56080 (x6)  
**EAN article:**  
5450168560802  
**EAN box:**  
5450168360808

6 items  
320 boxes  
20 layers



Organic





# 06

## CHEESE







# KACHKÉIS

## Typically Luxembourgish

Kachkéis is a Luxembourg cooked cheese specialty made in an artisanal manner, without preservatives or stabilisers. Kachkéis sausage can be cooked according to your taste, by melting it and incorporating various ingredients: salt, pepper, garlic, white wine... Thus, you can enjoy it on toast, with potatoes, in a soup, ... The potted version can be enjoyed directly on toast and it's a real treat! We offer it plain and with herbs.



**Plain**  
**40 % F.D.M.**  
**100 G - Pot**

56235 (x6)  
**EAN article:**  
5450168562356  
**EAN box:**  
5450168362352

6 items  
312 boxes  
13 layers



**Plain**  
**40 % F.D.M.**  
**250 G - Pot**

56237 (x6)  
**EAN article:**  
5450168562370  
**EAN box:**  
5450168362376

6 items  
240 boxes  
15 layers



**With herbes**  
**40 % F.D.M.**  
**250 G - Pot**

56233 (x6)  
**EAN article:**  
5450168562332  
**EAN box:**  
5450168362338

6 items  
240 boxes  
15 layers



**Low fat**  
**0,1 % F.D.M.**  
**250 G - Pot**

56225 (x6)  
**EAN article:**  
5450168562257  
**EAN box:**  
5450168362253

6 items  
240 boxes  
15 layers



**Low fat**  
**0.1 % F.D.M.**  
**250 G - Roll**

56222 (x12)  
**EAN article:**  
5450168562226  
**EAN box:**  
5450168362222

12 items  
81 boxes  
9 layers

**Low fat**  
**0.1 % F.D.M.**  
**500 G - Roll**

56221 (x8)  
**EAN article:**  
5450168562219  
**EAN box:**  
5450168362215

8 items  
81 boxes  
9 layers





КРЕПКИЙ АЛКОГОЛЬ

АРМАГНАК

Samalens Bas Armagnac VSOP 290  
Cordon-Rouge Bas Armagnac VSOP 150

ЛИМОНЧАД

Bailey's Irish Cream 190  
Malibu 190  
Mammoth Sambuca 190

Лимончелло

Limoncello 160  
Limoncello 230  
Limoncello 230

БЕШЕРОВСКИ

Becherovka 240  
Becherovka 250  
Becherovka 275

КОМТРЕАН

Comteau 290  
Comteau 330  
Comteau 320

ФРАНГЕЛИКО

Frangelico 290  
Frangelico 330  
Frangelico 320

ВИСКИ

88



# GRATED CHEESE

## Brown your gratins perfectly

During the production and maturing of our Luxlait Emmental, our master cheesemakers select specific ferments that allow the formation of holes in the cheese when it matures in a warm cellar. This controlled process also gives Luxlait Emmental its characteristic fruity taste.



**31 % Fat**  
**200 G - Pack**

56404 (x12)  
**EAN article:**  
5450168564046  
**EAN box:**  
5450168364042

12 items  
140 boxes  
10 layers







# SLICED CHEESE

A range that will appeal to all palates...

Luxlait cheeses have their own character and will satisfy all desires. Our sliced cheeses are ideal for filling sandwiches or cold or hot snacks.



**Gouda**  
48 % F.D.M.  
170 G - Pack

56400 (x12)  
**EAN article:**  
5450168564008  
**EAN box:**  
5450168364004

12 items  
196 boxes  
7 layers



**Chapelain**  
48 % F.D.M.  
170 G - Pack

56255 (x12)  
**EAN article:**  
5450168562554  
**EAN box:**  
5410834165175

12 items  
196 boxes  
7 layers



**Emmental**  
49 % F.D.M.  
170 G - Pack

56408 (x12)  
**EAN article:**  
5450168564084  
**EAN box:**  
5450168364080

12 items  
196 boxes  
7 layers



**Edamer**  
44 % F.D.M.  
170 G - Pack

56401 (x12)  
**EAN article:**  
5450168564015  
**EAN box:**  
5450168364011

12 items  
196 boxes  
7 layers



**Abbaye**  
48 % F.D.M.  
170 G - Pack

56402 (x12)  
**EAN article:**  
5450168564022  
**EAN box:**  
5450168364028

12 items  
196 boxes  
7 layers



**Gouda light**  
17 % F.D.M.  
170 G - Pack

56403 (x12)  
**EAN article:**  
5450168564039  
**EAN box:**  
5450168364035

12 items  
196 boxes  
7 layers



Large  
size  
P.138







# 0% LACTOSE CHEESE

**Luxlait is developing its range of lactose-free products with two sliced cheeses.**

Luxlait cheeses have their own character and will satisfy all desires. Our sliced cheeses are ideal for filling sandwiches or cold or hot snacks.



**0% lactose  
Sliced Emmental  
49 % F.D.M  
170 G - Pack**

56409 (x12)  
**EAN article:**  
5450168564091  
**EAN box:**  
5450168364097

12 items  
196 boxes  
7 layers



**0% lactose  
Sliced Gouda  
48 % F.D.M  
170 G - Pack**

56399 (x12)  
**EAN article:**  
5450168563995  
**EAN box:**  
5450168363991

12 items  
196 boxes  
7 layers





# ORGANIC

# BRIE



## Subtle taste

Our brie will delight your taste buds with its subtle taste. Ideal on a cheese platter, Brie can also be enjoyed on a slice of bread or in your savoury dishes.



**33 % fat**  
**150 G**  
**Paper wrap**

*56410 (x6)*  
**EAN article:**  
5450168564107  
**EAN box:**  
5450168364103

*6 items*  
*160 boxes*  
*10 layers*



Organic







# BEER CHEESE

**A unique combination of a typical Luxlait cheese, matured for several months, and Battin Brune beer.**

The unique character of our cheese lies in the texture, roundness, and fruitiness of a mature cheese, combined with the caramelised notes of the sublimely roasted malt of Battin Brune beer.



**Battin Brune Beer  
Cheese**  
**48 % F.D.M**  
**140 G - Pot**

56469 (x6)

**EAN article:**  
5450168564695

**EAN box:**  
5450168364691

*6 items*  
*100 boxes*  
*10 layers*



Large  
size  
P.138





# CRÈME DE CHAPELAIN

## Processed cheeses for spreading

Our Crème de Chapelain is a melted cheese cream made from high quality ingredients such as our gouda and the famous "Beurre Rose". Crème de Chapelain is eaten as a spread on bread but can also be used as a sauce for your pasta, meat or poultry dishes.



**Plain**  
**25 % fat**  
**125 G - Pot**

56241 (x6)  
**EAN article:**  
5450168568417  
**EAN box:**  
5450168362413

*6 items.*  
*240 boxes*  
*15 layers*



**With black truffle from  
the Périgord**  
**34 % fat**  
**125 G - Pot**

56242 (x6)  
**EAN article:**  
5450168562424  
**EAN box:**  
5450168362420

*6 items*  
*240 boxes*  
*15 layers*





# 07

## YAOURT DU LUXEMBOURG







# YOGHURT

## Diversity is the order of the day

The "Luxembourg yoghurt" range demonstrates Luxlait's expertise in yoghurts. Their packaging in the form of duo-pack, family pot or 8-pack are perfectly suited to all consumption methods.



**Plain**  
3.5 % fat  
500 G - Pot

54101 (x6)  
**EAN article:**  
5450168541016  
**EAN box:**  
5450168341012



**Plain**  
3.5 % fat  
2x 125 G - duo pack

54410 (x12)  
**EAN article:**  
5450168544109  
**EAN box:**  
5450168344105



**Strawberry**  
1.5 % fat  
500 G - Pot

54107 (x6)  
**EAN article:**  
5450168541078  
**EAN box:**  
5450168341074



**Strawberry**  
1.5 % fat  
2x 125 G - duo pack

54465 (x12)  
**EAN article:**  
5450168544659  
**EAN box:**  
5450168344655



**Vanilla**  
1.5 % fat  
500 G - Pot

54108 (x6)  
**EAN article:**  
5450168541085  
**EAN box:**  
5450168341081



**Vanilla**  
1.5 % fat  
2x 125 G - duo pack

54472 (x12)  
**EAN article:**  
5450168544727  
**EAN box:**  
5450168344723



**Pineapple**  
1.5 % fat  
500 G - Pot

54104 (x6)  
**EAN article:**  
5450168541047  
**EAN box:**  
5450168341043



**Pineapple**  
1.5 % fat  
2x 125 G - duo pack

54466 (x12)  
**EAN article:**  
5450168544666  
**EAN box:**  
5450168344662



**Peach - passion fruit**  
1.5 % fat  
500 G - Pot

54106 (x6)  
**EAN article:**  
5450168541061  
**EAN box:**  
5450168341067

**500G**  
6 items  
160 boxes  
15 layers

**2x 125 G**  
12 items  
135 boxes  
15 layers



Large size  
P.142







# YOGHURT



**Blueberry**  
1.5 % fat  
2x 125 G - duo pack

54468 (x12)  
**EAN article:**  
5450168544680  
**EAN box:**  
54501683444686



**Pina Colada**  
2.2 % fat  
2x 125 G - duo pack

54476 (x12)  
**EAN article:**  
5450168544765  
**EAN box:**  
5450168344761



**Lemon**  
1.5 % fat  
2x 125 G - duo pack

54473 (x12)  
**EAN article:**  
5450168544734  
**EAN box:**  
5450168344730



**Cherry**  
1.5 % fat  
2x 125 G - duo pack

54469 (x12)  
**EAN article:**  
5450168544697  
**EAN box:**  
5450168344693



**Raspberry**  
1.5 % fat  
2x 125 G - duo pack

54467 (x12)  
**EAN article:**  
5450168544673  
**EAN box:**  
5450168344679



**Rhubarb**  
1.5 % fat  
2x 125 G - duo pack

54464 (x12)  
**EAN article:**  
5450168544642  
**EAN box:**  
5450168344648



**Hazelnut**  
3.7 % fat  
2x 125 G - duo pack

54470 (x12)  
**EAN article:**  
5450168544703  
**EAN box:**  
5450168344709



**Peach**  
1.5 % fat  
2x 125 G - duo pack

54471 (x12)  
**EAN article:**  
5450168544710  
**EAN box:**  
5450168344716



**Strawberry - 6 grains**  
1.6 % fat  
2x 125 G - duo pack

54463 (x12)  
**EAN article:**  
5450168544635  
**EAN box:**  
5450168344631

2x 125 G  
12 items  
135 boxes  
15 layers



Large  
size  
P.142





# YOGHURT



**Plain stirred pack**  
**1.5 % fat**  
**8x 125 G - multi pack**

54132 (x3)  
**EAN article:**  
5450168541320  
**EAN box:**  
5450168341326



**Fruit variety pack**  
Strawberry - pineapple - cherry  
- peach  
**1.5 % fat**  
**8x 125 G - multi pack**

54234 (x3)  
**EAN article:**  
5450168542341  
**EAN box:**  
5450168342347

**8x125G**  
3 items  
135 boxes  
15 layers







# WINTER YOGHURT

## Your favourite winter flavours

The perfect range for gourmets looking to comfort themselves when the cold season arrives. The flavours offered such as Speculoos, Mandarin Cheesecake or even Honey & Nuts will delight taste buds in search of traditional flavours of the end-of-year celebrations.



**Speculoos**  
**3.5 % fat**  
**2x 125 G - duo pack**

54427 (x12)  
**EAN article:**  
5450168544277  
**EAN box:**  
5450168344273



**Honey-Walnut**  
**2.3 % fat**  
**2x 125 G - duo pack**

54428 (x12)  
**EAN article:**  
5450168544284  
**EAN box:**  
5450168344280



**Mandarin Cheesecake**  
**1.6 % fat**  
**2x 125 G - duo pack**

54426 (x12)  
**EAN article:**  
5450168544260  
**EAN box:**  
5450168344266

**2x 125 G**  
*12 items*  
*135 boxes*  
*15 layers*





# SUMMER YOGHURT

## Escape during the summer

With the arrival of fine weather, Luxlait is reinventing itself and launching a range of three summer yoghurts with new flavours! The well-balanced combination of fruits, spices and fruit juice provides an original sensation of freshness. The flavours on offer, such as Yuzu & Green Tea, Mango & Turmeric or Cactus & Lime are very trendy and will delight the taste buds seeking novelty and quality.



**Yuzu - green tea**  
**1.5 % fat**  
**2x 125 G - duo pack**

54419 (x12)  
**EAN article:**  
5450168544192  
**EAN box:**  
5450168344198



**Mango - turmeric**  
**1.6 % fat**  
**2x 125 G - duo pack**

54424 (x12)  
**EAN article:**  
5450168544246  
**EAN box:**  
5450168344242



**Lime - cactus**  
**1.6 % fat**  
**2x 125 G - duo pack**

54423 (x12)  
**EAN article:**  
5450168544239  
**EAN box:**  
5450168344235

**2x 125 G**  
12 items  
135 boxes  
15 layers





# CREAM YOGHURT 10% FAT

## Gourmet pleasure

Rich and creamy our 10% fat, creamy yoghurt is the dessert of gourmets. At any time of the day, let yourself be tempted by this creamy yoghurt, subtly accompanied by pieces of fruit or fine shavings of chocolate, such as with the stracciatella creamy yoghurt.



**Strawberry**  
**10 % fat**  
**2x 125 G - duo pack**

54433 (x12)  
**EAN article:**  
5450168544338  
**EAN box:**  
5450168344334



**Stracciatella**  
**11.5 % fat**  
**2x 125 G - duo pack**

54430 (x12)  
**EAN article:**  
5450168544307  
**EAN box:**  
5450168344303



**Fruits of the orchard**  
**10 % fat**  
**2x 125 G - duo pack**

54431 (x12)  
**EAN article:**  
5450168544314  
**EAN box:**  
5450168344310



**Vanilla**  
**11 % fat**  
**2x 125 G - duo pack**

54435 (x12)  
**EAN article:**  
5450168544352  
**EAN box:**  
5450168344358



**Fruits of the forest**  
**10 % fat**  
**2x 125 G - duo pack**

54432 (x12)  
**EAN article:**  
5450168544321  
**EAN box:**  
5450168344327



**Lemon**  
**10 % fat**  
**2x 125 G - duo pack**

54434 (x12)  
**EAN article:**  
5450168544345  
**EAN box:**  
5450168344341

**2x 125 G**  
12 items  
135 boxes  
15 layers





# ORGANIC YOGHURT



## Yoghurts from the organic sector

Made without preservatives from milk, fruit and sugar certified by the European Union organic label. Our natural organic yoghurt is stirred, which gives it a creamy and smooth texture, to prolong your pleasure.



**Plain**  
**3.5 % fat**  
**2x 125 G - duo pack**

54490 (x12)  
**EAN article:**  
5450168544901  
**EAN box:**  
5450168344907



**Vanilla**  
**2.7 % fat**  
**2x 125 G - duo pack**

54493 (x12)  
**EAN article:**  
5450168544932  
**EAN box:**  
5450168344938



**Peach**  
**2.8 % fat**  
**2x 125 G - duo pack**

54491 (x12)  
**EAN article:**  
5450168544918  
**EAN box:**  
5450168344914



**Strawberry**  
**2.8 % fat**  
**2x 125 G - duo pack**

54492 (x12)  
**EAN article:**  
5450168544925  
**EAN box:**  
5450168344921

**2x 125 G**  
12 items  
135 boxes  
15 layers



Organic





so, pa  
do inspiro y re  
mi respiración tranquila.  
«Espirando sonrió.» Ya sabe  
relajar toda vuestra musculatura facial. Lucid  
el rostro es la señal de que sois dueños de vosotros mis  
«Vivo el momento presente.» Estoy aquí sentado  
pienso en nada más. Estoy sentado aquí y sé exacta  
dónde estoy.  
«Sabiedo que es un momento bello.» Es  
estar sentado, erguido en mi sitio y recuperar  
ción, la sonrisa y nuestra auténtica naturaleza.  
tados con la vida en el momento presente. S  
alegres y en paz ahora mismo, ¿cuándo van  
¿Mañana? ¿Pasado mañana? ¿Qué es lo que  
felices ahora mismo? Siguiendo el comp  
piración podemos decir, simplemente:  
sonriente momento presente es un mon  
Este no es un ejercicio solo para pri  
los que llevamos cerca de catorce o  
la respiración consciente segui  
le este tipo por su importanc

# LIGHT YOGHURT

## With the 0% fat fruit yoghurt, treat yourself

Available plain or with fruit, our 0% yoghurts contain less than 0.5% fat and are reduced in sugar compared to our classic yoghurts. With its light texture and low acidity, it is a pleasant product to eat. So, why deprive yourself?



**Plain**  
**0.4 % fat**  
**2x 125 G - duo pack**

54411 (x12)  
**EAN article:**  
5450168544116  
**EAN box:**  
5450168344112



**Fruits of the forest**  
**0.1 % fat**  
**2x 125 G - duo pack**

54441 (x12)  
**EAN article:**  
5450168544413  
**EAN box:**  
5450168344419



**Muesli**  
**0.4 % fat**  
**2x 125 G - duo pack**

54443 (x12)  
**EAN article:**  
5450168544437  
**EAN box:**  
5450168344433



**Strawberry**  
**0.1 % fat**  
**2x 125 G - duo pack**

54440 (x12)  
**EAN article:**  
5450168544406  
**EAN box:**  
5450168344402



**Apricot**  
**0.1 % fat**  
**2x 125 G - duo pack**

54442 (x12)  
**EAN article:**  
5450168544420  
**EAN box:**  
5450168344426

**2x 125 G**  
12 items  
135 boxes  
15 layers





# FUNNY YOGHURT

## A good yoghurt with a good fruity taste

Our good local milk and carefully mixed fruits make this yoghurt a favourite with children. As a dessert or snack, it will accompany them in their daily lives.



**Banana**  
**1.5 % fat**  
**2x 125 G - duo pack**

54450 (x12)  
**EAN article:**  
5450168544505  
**EAN box:**  
5450168344501



**Apricot**  
**1.5 % fat**  
**2x 125 G - duo pack**

54451 (x12)  
**EAN article:**  
5450168544512  
**EAN box:**  
5450168344518



**Strawberry**  
**1.5 % fat**  
**2x 125 G - duo pack**

54452 (x12)  
**EAN article:**  
5450168544529  
**EAN box:**  
5450168344525

**2x 125 G**  
*12 items*  
*135 boxes*  
*15 layers*







# 08

## DAIRY DESSERT







# WHITE CHEESE & FRUITS

## A gourmet and generous range

Available in 4 different flavours, our white cheeses on fruit will delight the whole family. For dessert or as a snack, you will love them for their lightness.



**Strawberry**  
5 % fat  
150 G - Pot

56114 (x6)  
**EAN article:**  
5450168561144  
**EAN box:**  
5450168361140



**Apricot**  
5 % fat  
150 G - Pot

56115 (x6)  
**EAN article:**  
5450168561151  
**EAN box:**  
5450168361157



**Pear**  
5 % fat  
150 G - Pot

56116 (x6)  
**EAN article:**  
5450168561168  
**EAN box:**  
5450168361164



**Fruits of the forest**  
5 % fat  
150 G - Pot

56117 (x6)  
**EAN article:**  
5450168561175  
**EAN box:**  
5450168361171



**Cherry**  
7,6 % fat  
150 G - Pot

56119 (x6)  
**EAN article:**  
5450168561199  
**EAN box:**  
5450168361195



**Pineapple**  
7,6 % fat  
150 G - Pot

56118 (x6)  
**EAN article:**  
5450168561182  
**EAN box:**  
5450168361188

**150 G**  
6 items  
320 boxes  
20 layers





# SKYR

## Icelandic inspiration

Skyr, a must-try from Iceland, is renowned for its deliciously tender texture and subtle tangy taste. Made from 100% Luxembourg milk, Luxlait Skyr is also rich in protein.



**Plain**  
**0% Fat**  
**150 G - Pot**

56139 (x6)  
**EAN article:**  
545016851397  
**EAN box:**  
5450168361393



**Plain**  
**0% Fat**  
**150 G - Pot**

56138(x6)  
**EAN article:**  
5450168561380  
**EAN box:**  
5450168361386



**Blueberry**  
**0% m.g.**  
**150 G - Pot**

56132 (x6)  
**EAN article:**  
5450168561328  
**EAN box:**  
5450168361324



**Vanilla**  
**0% m.g.**  
**150 G - Pot**

56131 (x6)  
**EAN article:**  
5450168561311  
**EAN box:**  
5450168361317



**Lemon**  
**0% m.g.**  
**150 G - Pot**

56130(x6)  
**EAN article:**  
5450168561304  
**EAN box:**  
5450168361300

**500G**  
*6 items*  
*160 boxes*  
*15 layers*

**150 G**  
*6 items*  
*320 boxes*  
*20 layers*







# GREEK - STYLE YOGHURT

## A moment of relaxation

Greek-style yoghurt is a traditional thick, creamy and tasty dairy product. It comes in four flavours: plain, honey, strawberry and peach & passion fruit. Plain, it can be used to enhance your dishes.



**Plain**  
**12 % fat**  
**150 G - Pot**

54250 (x6)  
**EAN article:**  
5450168542501  
**EAN box:**  
5450168342507



**Honey**  
**10 % fat**  
**150 G - Pot**

54251 (x6)  
**EAN article:**  
5450168542518  
**EAN box:**  
5450168342514



**Pomme caramélisée**  
**10 % m.g.**  
**150 G - Pot**

54252 (x6)  
**EAN article:**  
5450168542525  
**EAN carton:**  
5450168342538



**Cerise**  
**10 % m.g.**  
**150 G - Pot**

54253(x6)  
**EAN article:**  
5450168542532  
**EAN carton:**  
5450168342538



**Plain**  
**10 % fat**  
**1 KG - Pot**

54081 (x6)  
**EAN article:**  
5450168540811  
**EAN box:**  
5450168340817



**Strawberry**  
**8.3 % fat**  
**1 KG - Pot**

54082 (x6)  
**EAN article:**  
5450168540828  
**EAN box:**  
5450168340824



**Peach - passion fruit**  
**8.2 % fat**  
**1 KG - Pot**

54083 (x6)  
**EAN article:**  
5450168540835  
**EAN box:**  
5450168340831

**150G**  
6 items  
320 boxes  
20 layers

**1 KG**  
6 items  
90 boxes  
10 layers



Large  
size  
P.142





A person wearing a blue button-down shirt with their hands clasped in front of them. The background is dark and out of focus.

# 09

**LUXLAIT XXL  
FOOD SERVICE  
INDUSTRIAL USES**





# INDUSTRIAL USES

## 10-litre plastic bags in cardboard boxes or crates

Type of milk according to request: 1.5%, 3.5%, organic, etc.



cap  
resealable  
aseptic



spout  
aseptic

### BAG IN BOX

#### avec aseptique spout

Suitable for multiple industrial food processing uses and optimised for precise handling and dosing.

### PLASTIC CONTAINER FOLDABLE - 1000 L

- Contains a plastic bag guaranteeing a high level of hygiene

- Designed for storing and moving liquid products

Hygienic, non-corrosive, easy to clean

- Ideal for the food industry



### RETURNABLE PLASTIC VAT

- For 10 L bags

- Waste reduction







# FRESH MILK & CREAM

## 10-litre plastic bags in cardboard boxes or crates

Type of milk according to request: 1.5%, 3.5%, organic, etc.



**Fresh milk**  
**3.5 % fat**  
**Bec - 10 L**

51102  
**EAN box:**  
5450168511026

*1 items*  
*76 boxes*  
*4 layers*



**Fresh milk**  
**3.5 % fat**  
**10 L**

51097  
**EAN box:**  
5450168510975

*1 items*  
*48 boxes*  
*6 layers*



**Fresh organic milk**  
**3.5 % fat**  
**10 L**

51912  
**EAN box:**  
5450168519121

*1 items*  
*48 boxes*  
*6 layers*



**Fresh liquid cream**  
**36 % fat**  
**10 L**

53080  
**EAN box:**  
5450168330801

*1 items*  
*48 boxes*  
*6 layers*

*Returnable  
plastic vat*





# FRESH CREAM

## Customisation with or without label Monochrome printing

Bucket with hermetic lid for optimum hygiene.  
With hinge for easy handling. Volume perfectly suited to professional use: food industry, bakeries, HORESCA (Hotels, Restaurants & Cafés), etc.



**Fresh liquid cream**  
**36 % fat**  
**Bucket - 5 KG**

53351  
**EAN box:**  
5450168533516

*90 items*  
*5 layers*



**Fresh sour cream**  
**30 % fat**  
**Bucket - 5 KG**

53150  
**EAN box:**  
5450168531505

*90 items*  
*5 layers*



**Fresh light sour  
cream**  
**15 % fat**  
**Bucket - 5 KG**

53152  
**EAN box:**  
5450168531529

*90 items*  
*5 layers*



**UHT coffee cream**  
**10 % fat**  
**240 x 7.5 G**

53217 (x240)  
**EAN box:**  
5450168532175

*240 items*  
*192 boxes*  
*12 layers*



**UHT coffee cream**  
**10 % fat**  
**20x 10x 10 G**

53218 (x20)  
**EAN article:**  
5450168532182  
**EAN box:**  
5450168332188

*20 items*  
*180 boxes*  
*15 layers*





0  
DANISH

# BUTTER



## A RECIPE UNCHANGED SINCE 1932

The 5 kg slabs are perfectly suited to professional use. Their weight is optimised for easy handling by operators in production.



**"Beurre Rose"**  
**2x5KG - 82 % fat**  
**Greaseproof paper**

52120 (x2)  
**EAN article:**  
5450168521209  
**EAN box:**  
5450168321205

2 items  
50 boxes  
5 layers



**"Beurre Rose"**  
**100 x 10G - 82 % fat**  
**Plastic tray**

52122 (x10)  
**EAN article:**  
5450168521223  
**EAN Box:**  
5450168321229

10 pcs.  
37 cartons  
4 layers



AOP





# CHEESE

## A RANGE THAT WILL APPEAL TO ALL PALATES

The 3,5 kg slabs are perfectly suited to professional use. Their weight is optimised for easy handling by operators in production.



**Gouda 3.5 KG**  
**48 % F.D.M. - bloc**

96436  
**EAN box:**  
5450168964365

*5 items*  
*36 boxes*  
*9 layers*



**Edam 3.5 KG**  
**30 % F.D.M - bloc**

96437  
**EAN box:**  
5450168964372

*5 items*  
*36 boxes*  
*9 layers*



**Gouda light 3.5 KG**  
**17 % fat - bloc**

96438  
**EAN box:**  
5450168964389

*5 items*  
*36 boxes*  
*9 layers*



**Battin beer cheese**  
**48 % fat - bloc**

56467  
**EAN box:**  
5450168964372

*10 items*  
*16 boxes*  
*4 layers*



**3.5 KG - Bloc**  
**With or without**  
**returnable plastic**  
**box**

*5 items*  
*36 boxes*  
*9 layers*



**16 KG - Bloc**  
**With or without**  
**returnable plastic**  
**box**

*1 items*  
*36 boxes*  
*9 layers*

*Uncooked pressed cheese*  
*(3.5 & 16 KG)*





# WHITE CHEESE

## A TOUCH OF FRESHNESS AND A MELTING TEXTURE

Luxlait has developed a creamy, smooth and soft white cheese for you. With no additives or preservatives, you will find all the purity and benefits of a fresh cheese rich in calcium.



**Cream cheese**  
**9.2 % fat - 5 KG**

56121  
**EAN article:**  
5450168561212

90 items  
5 layers



**Low fat white cheese**  
**0.2 % fat - 5 KG**

56101  
**EAN article:**  
5450168561014

90 items  
5 layers



**Cream cheese**  
**3 % fat - 1 KG**

56102  
**EAN article:**  
5450168561021

90 items  
10 Layers



**Low fat white cheese**  
**0.2 % fat - 80 G**

56107  
**EAN article:**  
5450168561076  
**EAN box:**  
5450168361072

24 items  
180 boxes  
20 layers



**Low fat white cheese**  
**0.2 % fat - 10 KG**

56100  
**EAN article:**  
5450168561007

52 items  
4 layers

*Customisation*  
*With or without label*  
*Monochrome printing*





# YOGHURT

## A range of yoghurts with authentic flavours

A range of premium yoghurts delicately stirred with authentic and original flavours.



**Plain**  
**3.5 % fat - 5 KG**

54090  
**EAN article:**  
5450168540903

90 items  
5 layers



**Plain low-fat**  
**0.1 % fat - 5 KG**

54089  
**EAN article:**  
5450168540897

90 items  
5 layers



**Strawberry**  
**1.5 % fat - 5 KG**

54091  
**EAN article:**  
5450168540910

90 items  
5 layers



**Peach - passion fruit**  
**1.5 % fat - 5 KG**

54093  
**EAN article:**  
5450168540934

90 items  
5 layers



**Greek - style yoghurt**  
**10 % fat - 5 KG**

54079  
**EAN article:**  
5450168540798

52 items  
4 layers

*Customisation*  
*With or without label*  
*Monochrome printing*





# YOGHURT

## Diversity is the order of the day

A range of premium yoghurts delicately stirred with authentic and original flavours.



**Plain**  
**8x80 G - 3.5 % fat**  
**Pot**

54114



**Fruit variety**  
*Strawberry -  
pineapple- cherry  
- peach*  
**8x80 G - 3.5 % fat**  
**Pot**

54309



**Cherry**  
**8x 125 G - 1.8 % fat**  
**Pot**

54301



**Strawberry**  
**8x 125 G - 1.8 % fat**  
**Pot**

54300



**Peach**  
**8x 125 G - 1.8 % fat**  
**Pot**

54303



**Pineapple**  
**8x 125 G - 1.8 % fat**  
**Pot**

54302



LUXLAIT

BIO

LAIT FRAIS

Lait frais entier microfiltré pasteurisé  
issu de l'agriculture biologique:  
garantie de fraîcheur plus longue.  
La technique de microfiltration permet  
au lait frais de garder son goût naturel ainsi  
que ses qualités gustatives.

Microfiltrierte und pasteurisierte frische Vollmilch  
aus kontrolliert biologischer Landwirtschaft:  
längere Frischegarantie.  
Die Technik der Mikrofiltrierung erlaubt es  
die Milch länger frisch zu halten und dabei  
ihren natürlichen Geschmack sowie die  
gute Qualität zu bewahren.

Gemicrofiteerde en gepasteuriseerde  
verse volle melk uit biologische landbouw:  
langere houdbaarheid gegarandeerd.  
De techniek van microfiltratie maakt het  
mogelijk om de melk langer vers te houden,  
met behoud van hun natuurlijke smaak en  
goede kwaliteit.

Microfiltered and pasteurized fresh whole milk  
issued from organic farming:  
longer freshness warranty.  
The technique of microfiltration allows keeping  
the milk longer fresh, while preserving its  
natural taste and good quality.

Conservation period: see impression / Zu verbrauchen bis: siehe  
Impression / To consume by: see impression /  
Verbruikstermijn: zie opdruk / Use by: see impression

LUXLAIT +  
+4°C

A blurred industrial background featuring a large white number '10' and the text 'CUSTOM MADE' overlaid. The background shows a factory floor with various metal components and machinery, including a large blue vertical structure and a white cylindrical object in the foreground.

# 10

## CUSTOM MADE



# TRUST US WITH YOUR PROJECT

| Private label

| Fancy label

| White label

# YOUR PROJET

Luxlait is a key player, able to support you in the development of your projects, by offering you its end-to-end industrial expertise.

All the Luxlait services are mobilised for your success:

## 01

### R&D

All our expertise at your service, for the design of healthy, balanced, tasty and profitable products.



## 02

### Production

Luxlait has a mini dairy where the industrial process and the final quality of the product will be validated before series production.



## 03

### Quality

The certifications Luxlait has at its disposal guarantee controlled and flawless production.



## 04

### Check

We verify the legally required designations on your packaging.



Entrust us with all or part of your project, like dozens of important players in the European agribusiness.











# A SALES TEAM WHO LISTENS TO YOU

---

## Export department

✉ [commerciaux-export@luxlait.lu](mailto:commerciaux-export@luxlait.lu)

☎ +352 250 280 250

## Luxembourg department

✉ [commerciauxlux@luxlait.lu](mailto:commerciauxlux@luxlait.lu)

☎ +352 250 280 330



- SINCE 1894 -



*Premium Dairy Products*

**LUXLAIT Association Agricole**

3, Am Seif L-7759 Roost-Bissen  
B.P. 87 L-7501 Mersch  
LUXEMBOURG

[www.luxlait.lu](http://www.luxlait.lu)

